

Tacton Design Automation Studio

- > Tacton Design Automation Studio enables you to set up, maintain and test your design automation projects right from within your 3D CAD software
- > Your organization can use the Design Automation projects in the Tacton CPQ tools
- > Tacton Design Automation Studio connects to SOLIDWORKS and Inventor

Let Tacton Design Automation Studio manage routine, repetitive design tasks – so you can focus on innovating your products

- > Fully imbedded in CAD
- > Easy to implement, easy to maintain
- > Distributed rule maintenance
- > Compatible with all standard Tacton products
- > Solves the configuration challenges that others cannot

“We can be confident of the integrity of the drawings, and they are created automatically for suppliers as well as internal production and assembly. Fewer errors mean we never have to halt our design process and redesign parts, which can be very expensive and frustrating when everyone is working to strict timetables.”

Pär Hallgren
Caterpillar Propulsion

The tool enables you to set up detailed product definitions that capture all the business logic relevant to your products.

Tacton Design Automation Studio is typically used by design engineers or product managers with a deep technical knowledge of CAD and of the products whose design process will be automated.

The Studio manages four distinct tasks:

- > Validating product data
- > Defining configuration rules
- > Structuring the end-user interface
- > Connecting with your CAD model

It contains a comprehensive set of modeling concepts and debugging tools as well as a fully functional runtime designed to make your configuration project run as smoothly as possible.

FULLY EMBEDDED IN CAD

The Studio comes fully embedded in your CAD application, so you can leverage your existing CAD investment. It allows your design engineers to interactively capture customer requirements and automatically receive feedback on incompatible choices and how to resolve potential conflicts.

EASY TO IMPLEMENT, EASY TO MAINTAIN

The Studio environment is highly intuitive and easy to use. With point-and-click features and auto-complete operations, no programming knowledge or IT expertise is needed to set up and maintain your design automation project.

Because configuration rules, product data and user interface data are stored separately, each of these areas can be changed independently without having to update or change the other areas. This is unique to Tacton, and means that you can quickly and easily make updates to the portfolio as products are introduced or evolve, and as pricing changes.

DISTRIBUTED RULE MAINTENANCE

Areas of product knowledge can be set up as separate modules with clear interfaces and areas of responsibility. This means you can allocate maintenance and support across your organization to best match product and commercial expertise.

COMPATIBLE WITH ALL STANDARD TACTON PRODUCTS

The Tacton Design Automation products are fully compatible with all other standard Tacton products. This makes it possible to use the configuration logic and data without any manual work, and have seamless integrations between the different systems.

SOLVES THE CONFIGURATION CHALLENGES THAT OTHERS CANNOT

At the heart of the solution, and what really sets Tacton apart, is a powerful, constraints-based configuration engine built to handle the most challenging configuration environments. The complexity of your product portfolio will never be a limiting factor in an implementation of Tacton design automation.

KEY FEATURES

Modeling features CAD configurator features

- > Structured and intuitive point-and-click modeling environment
- > Handles large and complex configurations
- > Product data, rules and user interface layers separated
- > Instant model validation with inspections
- > Rule documentation capabilities

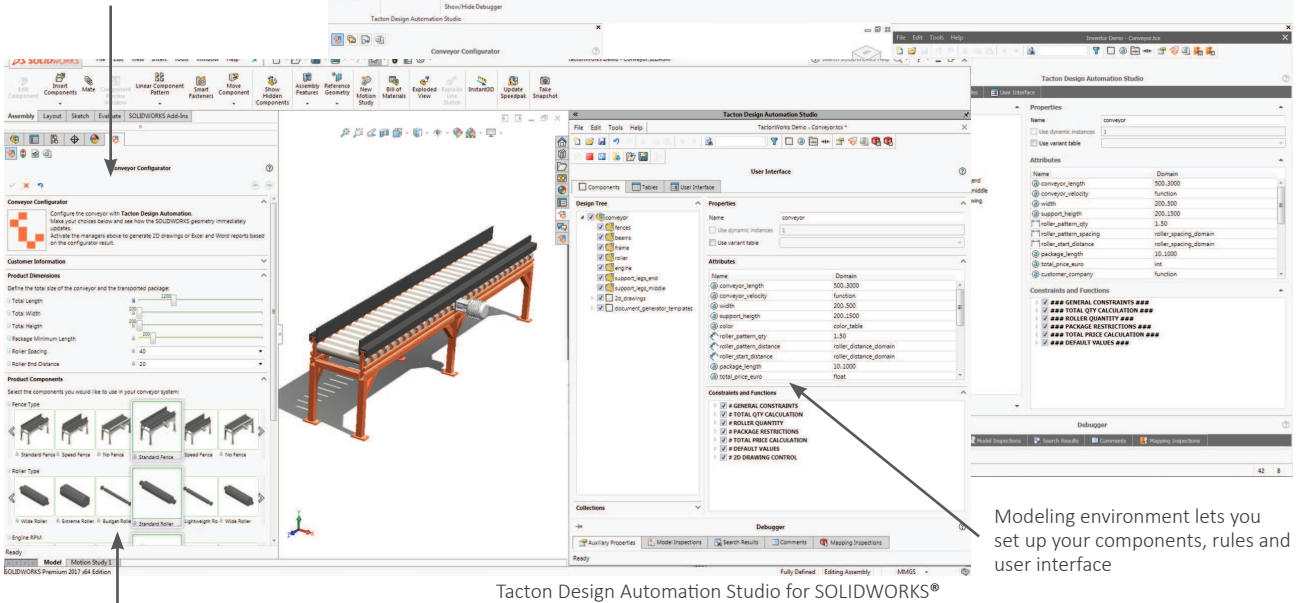
CAD configurator features

- > Fully embedded Studio and runtime inside the CAD environment
- > Structured and intuitive point-and-click CAD mapping tool
- > Instant mapping validation with inspections
- > Rule documentation capabilities

Integrations to external calculations

- > Javascript
- > DLLs

Runtime Interface lets you test your configuration model and CAD updates



Multiple user interface types simplify the user dialogue

Modeling environment lets you set up your components, rules and user interface

GAME-CHANGING CONFIGURATION

- > Constraint-based configuration means dramatically fewer rules
- > Always presents the solution that best meets the customers' needs
- > Highly scalable – the stateless configuration engine handles complex models and high user loads with ease and speed
- > All variables simultaneously considered. Ensures valid, error-free configuration – every time
- > Automatic error resolution and no dead-ends

MAINTENANCE & SUPPORT

- > No programming or IT expertise needed
- > Product data is maintained separately from configuration rules making it fast and easy to introduce and update products
- > Customer support by Tacton's knowledgeable consultants
- > Access to Knowledge Base online support

About Tacton

Tacton Systems is the world leader in solutions for Configure, Price and Quote (CPQ), also known as sales and product configuration. Tacton's solutions make it dramatically simpler to design, configure and sell products and services. The solutions integrate easily with surrounding systems and have standard integrations for many leading e-commerce, ERP, CRM, PDM, PLM, and CAD systems. Tacton is headquartered in Stockholm, Sweden, with customers and resellers across the globe. Customers currently using Tacton's solutions include ABB, Aker, Meyn and Siemens. Read more at www.tacton.com