

Tacton Design Automation Batch

What is Tacton Design Automation Batch?

Tacton Design Automation Batch enables you to batch-run design automation projects defined in Tacton Design Automation Studio. You can quickly and automatically generate a large amount of variants of a SOLIDWORKS document.

It is typically used by anyone that needs to generate large amounts of CAD documents, for example product catalog pictures or 3D models and 2D drawings for stock components to be stored in PDM or ERP systems.

Process All Your Valid Configurations

Tacton Design Automation Batch produces documents for all valid configurations based on the following input:

- A range of customer requirements in a wizard that generates documents for all valid configurations.
- A set of input files (Tacton Configurator state files) that represent a configuration for which result documents will be generated.

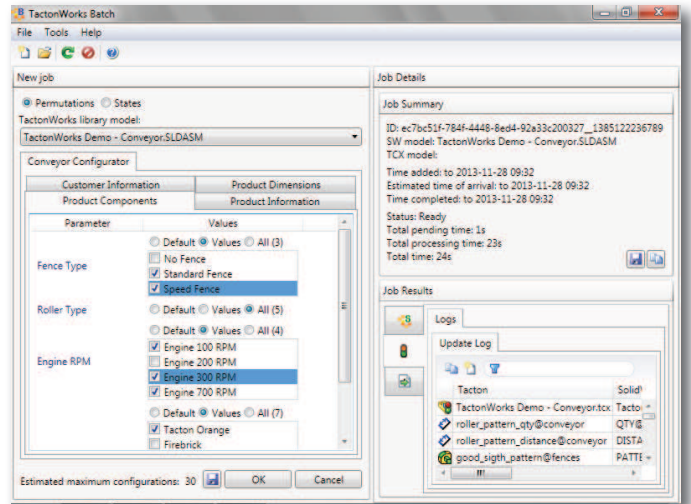
Save Time By Automating Your Routine Design

Tacton Design Automation Batch enables you to:

- Update a large amount of parameters in 3D models and 2D drawings to automate the design process based on the configuration result.
- Automatically save the configured 3D models and 2D drawings in all file formats provided by SOLIDWORKS, with customized names, customized save location, etc. based on the configuration result.

About Tacton

Tacton Systems is the world leader in solutions for Configure, Price and Quote (CPQ), also known as sales and product configuration. Tacton's solutions make it dramatically simpler to design, configure and sell products and services. The solutions integrate easily with surrounding systems and have standard integrations for many leading e-commerce, ERP, CRM, PDM, PLM, and CAD systems. Tacton is headquartered in Stockholm, Sweden, with customers and resellers across the globe. Customers currently using Tacton's solutions include ABB, Aker, Meyn and Siemens. Read more at www.tacton.com



- Update and save and Microsoft Word and Excel documents based on the configuration result, automating the production of customized quotations and bills of materials.

Integrate with Your Existing Enterprise Systems

Tacton Design Automation Batch offers standard integration and customization opportunities:

- Integrate with external systems to capture both data and documents during the configuration process. Typical examples are product information and CAD documents from ERP, PDM and PLM systems.
- Customize and complement Tacton Design Automation Batch's standard functionality via its support for customized add-ins.